

# Building and Grounds Monthly Meeting

May 5, 2024

# Quick Chronological Review

2021 – Conducted Listening and Placemaking sessions

2022 – Focused on Parking Lot and sought proposals for  
Landscape design

2023 – Received and reviewed proposal and awarded  
contract for a master site plan

- Provided Listening and Placemaking results
- Completed walk-through
- Presented 3 options at November MM

2024 – Revised and consolidated plan

Presented to March Monthly Meeting

UfuB

UsB



COURT STREET

EVERGREEN SCREEN PLANTING

VINE PLANTING ON EXTG FENCE

BURIAL AREA

REMOVE EXTG HEDGE. NEW HEDGE PLANTING

SHRUB + PERENNIAL PLANTING

STONE FINES PAVING W/ METAL EDGING

NEW PICNIC TABLE TERRACE

NEW BLUESTONE STEPPING STONE PATH (TYP.)

NEW TREE PLANTING (TYP.)

NEW SHRUB + PERENNIAL PLANTING (TYP.)

BURIAL AREA

STONE SEATING

NEW TREE PLANTING (TYP.)

STONE FINES STAGE

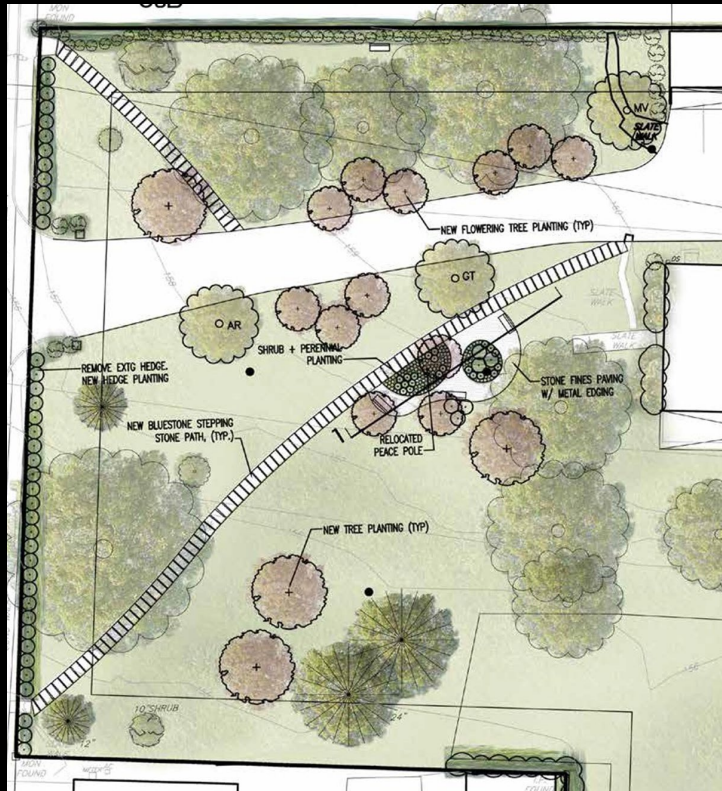
NEW VINES ON EXTG FENCE  
NEW PARK BENCH (TYP.)

APPROX. LOCATION OF FUTURE CHALLENGER SWIMMING POOL (TYPICAL)

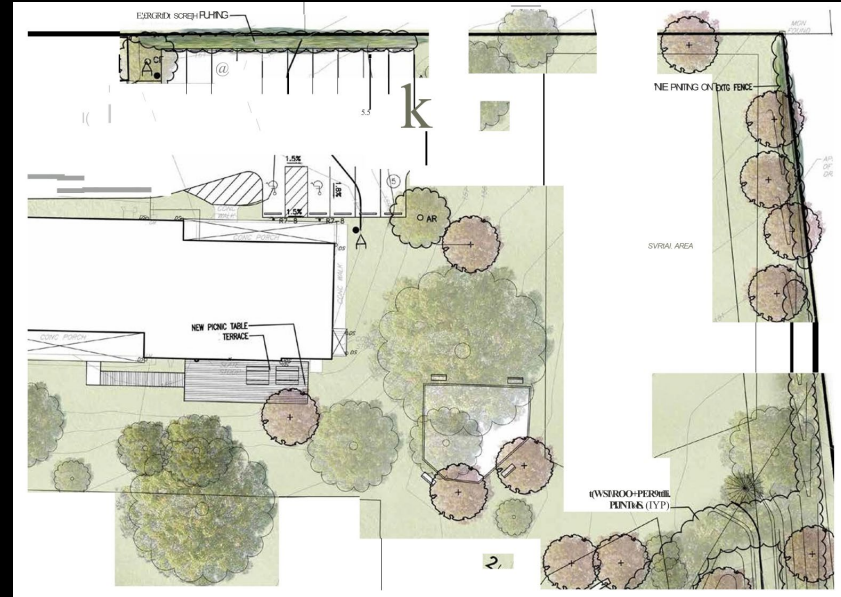
NOTE: SEE SHEET 2 (2000 AREA) FOR 1/2" SCALE PLAN OF THIS AREA (TYPICAL)

S 86' 31" W 7' 08"

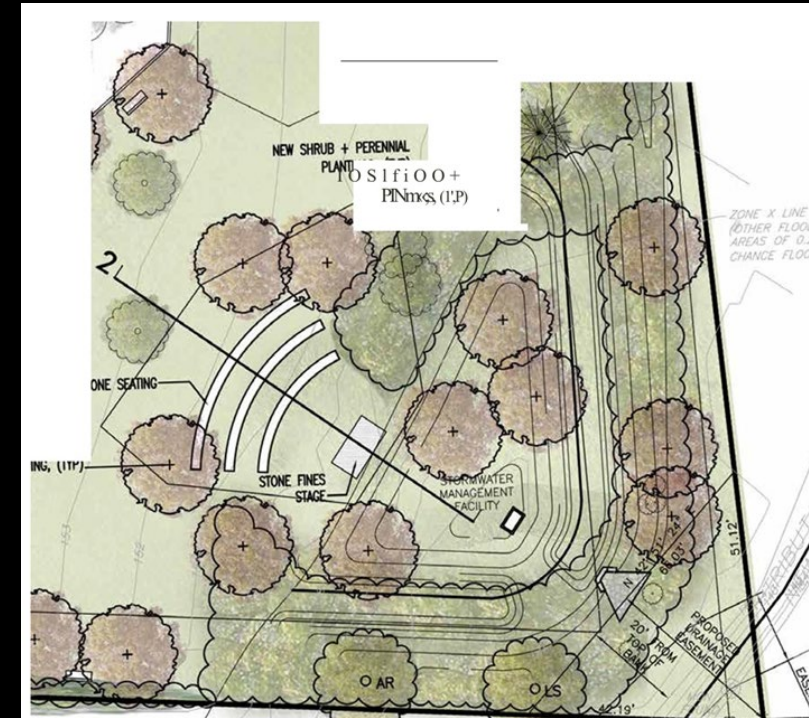
1:50 SCALE  
PROPERTY BOUNDARY  
EXISTING



Front/Welcome area



Rear/Gathering area



Back/Graveyard area

# Now what?

- Finalize Requirements
  - Decide which elements to retain or eliminate
  - Develop final plan
  - Develop cost based on final plan
    - Single or phased project breakdown
- Obtain Meeting approval for final plan and cost
- Move to implementation based on decision

# How will we finalize requirements?

- June 9 Session after Meeting for Worship
  - Facilitated work-session
  - Review features by locations on property
    - Front/Welcome area
    - Rear/Gathering area
    - Back/Graveyard area
  - Features selected based on current future needs and protection for the future – NOT COST
  - Design features frozen

# Then what?

- B&G develops project costs based on
  - Features retained
  - Single vs. phased implementation for presentation at future Monthly Meeting

